

# ADVANTAGE PLUS TIM-3600 SERIES REELS

## ADVANTAGE PLUS SERIES



### SLIDE-IN MOUNTING BRACKET

Optional slide-in bracket simplifies reel mounting. Easily allows one person to hang the reel in an overhead application

### LATCH SPRING

Heavy-duty latch spring is designed for years of trouble-free service, and can be replaced without removing or disassembling the reel

### ENCLOSED SPRING

Cartridge style spring motor is packed with grease and fully enclosed for extra safety. Springs are factory balanced for each size reel

### MOUNTING FLEXIBILITY

Multi-position guide arm is easily adjusted for ceiling, floor, wall, tank, or truck mounting

### STRENGTH BEADS

Reels are constructed with strength beads for added rigidity

### ROLLED EDGES

Hubs are constructed of heavy gauge steel with rolled edges for extra strength and maximum protection

### SELF-LUBRICATING

1" double supported steel axle with 1" self-lubricating precision bearings

### RIGID CONSTRUCTION

Base plate and support post are built from heavy 1/4" plate steel to reduce flexing and fatigue

### HI-FLOW SWIVEL

Load-free high-flow swivel allows maximum product delivery, and can be replaced without removing or disassembling the reel

### DURABLE FINISH

All Advantage Plus Series reels are powder-coated black for increased durability



Read the following precautions and instructions before you begin assembly or using. Failure to comply with these instructions could result in personal injury or property damage. Keep these instructions in a convenient location for future reference.

### Hose Reel Safety Precautions

- 1 Make sure incoming line pressure does not exceed rated operating pressure for your model hose reel.
- 2 Use proper eye protection when assembling and using the hose reel.
- 3 Assemble the hose reel on a clean workbench.
- 4 Use soap and water when checking for leaks.
- 5 Keep children away from the work area.

Warning: Exposure of skin directly to pressurized air, or fluid could result in severe bodily injury.

# ADVANTAGE PLUS TIM-3600 SERIES REELS

## **Installation of Reel**

- For overhead ceiling mounting: Install reels at least 10 feet above the floor (maximum of 14').
  - If the reel you have purchased does not have hose included, you will need to purchase and attach.
  - You will need to purchase appropriate hardware for mounting your new reel.
- 1 The reel base has four 1/2" (or 12.7mm) drilled holes for mounting on a suitable flat surface. **Error! Reference source not found.** is a template showing the correct location of the 4 mounting holes in the base.
  2. The reel is supplied with a hose guide roller bracket. The bracket position may be changed depending on the reel mounting position. Figure 1 shows "Typical Mounting Positions". If bracket position needs to be changed, do the following:
    - (1) Pull out some hose and let reel latch.
    - (2) Remove the bolts that attach the guide roller bracket to the support post.
    - (3) Rotate guide roller bracket to correct position, replace bolts and tighten.
  - 2 Using the four holes in the base, mount the reel in the desired location. Be sure to use appropriate hardware and tighten securely.
  - 3 Apply Teflon tape or pipe sealant to supply line threads, attach to reel inlet and tighten. The other end of incoming line can now be connected to desired supply source.
  - 4 If hose has been supplied with reel: Apply Teflon tape or pipe sealant to outlet fitting on reel hose, then attach to desired tool, or nozzle. Check connection for leakage and check hose reel for correct operation.
  - 5 If hose stopper adjustment is required, pull hose from reel and allow reel to latch at desired length. Loosen stopper bolts and slide stopper to a position close to the hose guide. Tighten stopper bolts, and unlatch the reel.

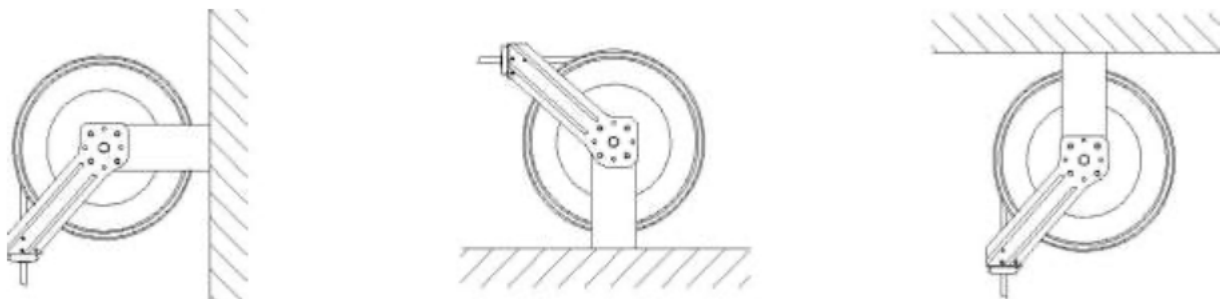
## **Installation of Hose**

- 1 Securely stabilize the reel.
- 2 Facing the swivel fitting side of reel: Turn the drum clockwise, by hand, until the rewind spring is tight, and drum has latched. As an extra precaution while installing new hose, secure drum in the latched position.
- 3 Insert end of the hose through guide roller bracket, and feed through the opening in the drum flange.
- 4 Use Teflon tape or pipe sealant on hose fitting threads, screw fitting into swivel and tighten.

Note: To avoid damage to the swivel, use a wrench to support the swivel fitting while tightening the hose.

- 5 Attach hose stopper on the other end of hose, near the outlet fitting.
- 6 Carefully release drum latch, and slowly allow hose to wind onto the reel.

Note: Final spring tension adjustment is accomplished by adding wraps of hose around the drum (to increase tension) or taking off wraps of hose (to decrease tension). Refer to: Adjustment of Spring Tension.



**Figure 1 Typical Mounting Positions**

# ADVANTAGE PLUS TIM-3600 SERIES REELS

## **Operation**

- 1 Check reel for correct operation by slowly pulling out the hose. A “clicking” noise will be heard every half revolution of the drum.
- 2 To latch the reel, pull out the hose and allow it to retract after hearing the first, second or third “click”.
- 3 To unlatch, slowly pull out the hose until the “clicking” noise stops, then let the hose retract until the hose stop rests against the hose guide.

Note: To avoid damage to the reel, always hold on to the hose while it is rewinding.

- 4 Periodically check the hose condition for wear or damage, and check the swivel fitting for leakage. Replace any worn, damaged, or leaking parts.

## **Adjustment of Spring Tension**

- 1 Pull out approximately 6 ft or 2 m of hose and allow the drum to latch.
- 2 Remove hose stopper from hose, and feed hose back through guide.
- 3 Wrap the pulled hose one time around the drum to increase tension or un-wrap hose one time from drum to decrease tension.
- 4 Re-insert hose through guide, and install stopper onto hose end.
- 5 Unlatch the Drum and check tension. Pull hose from reel, and adjust stopper position if necessary.

## **Replacement of Swivel Seal (TIM-3600-34 only)**

- 1 Turn off and disconnect supply line from swivel inlet.
- 2 Remove swivel assembly from reel axle.
- 3 Remove circlip from swivel, and take apart.

Note: You may want to remove swivel from reel hose end, but this is not necessary unless a new swivel is being installed.

- 4 Replace the seals and reassemble swivel.
- 5 Use Teflon type or thread sealant on swivel thread fitting, reconnect the swivel thread fitting with axle.
- 6 Re-connect inlet supply line.

## **Replacement of Hose**

- 1 Turn off supply to reel.
- 2 Pull out all the old hose and lock the reel in this position.

Caution: Make sure reel drum is securely locked and cannot rotate back.

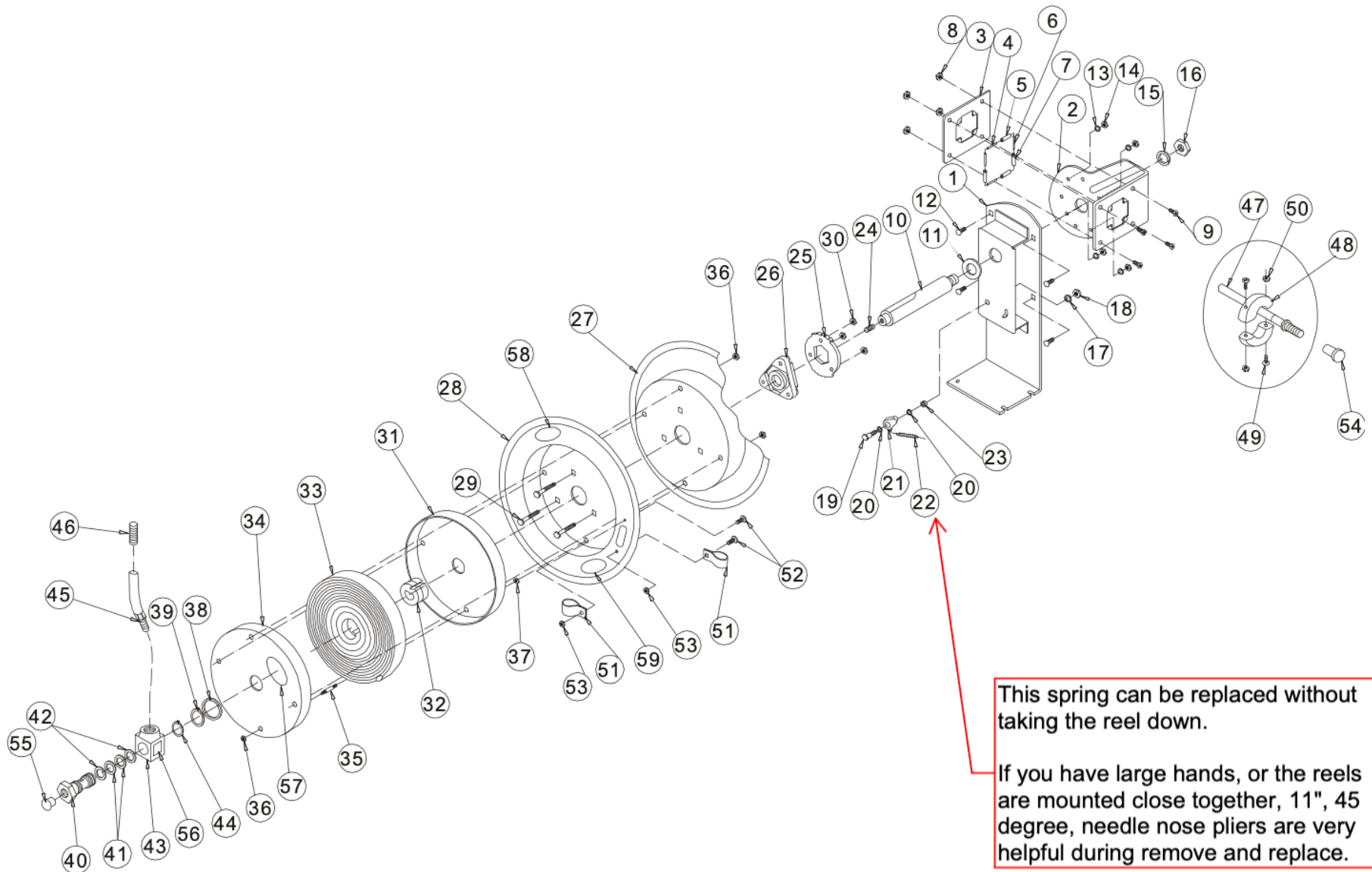
- 3 Remove two hose clamps from hose.
- 4 Carefully disconnect hose from swivel joint on side of reel, or male fitting in axle center and remove old hose.
- 5 Feed new hose through guide and opening in drum, and connect to swivel. Re-install two hose clamps, on inside and outside of drum flange. Install stopper on other end of hose in the same position as before.
- 6 Carefully release the drum latch, and slowly allow the hose to wind onto the reel.

Note: Final spring adjustment is accomplished by adding or removing wraps of hose around the drum. (Details see spring tension adjustment).

## **Spring Canister Warning**

If the rewind spring fails for any reason: For safety reasons, the rewind spring is not repairable.

# ADVANTAGE PLUS TIM-3600 SERIES REELS



# ADVANTAGE PLUS TIM-3600 SERIES REELS

## TIM-3600 Series Parts List

**NOTE: Position numbers not listed below are not available for purchase as individual piece parts.**

#	Qty.	Description	Part Number (P/N)		
01	1	Reel Base	<b>TIM-3600-1A</b>		
02	1	Reel Arm	<b>TIM-3600-2</b>		
03	1	Guide Plate	<b>TIM-3600-3</b>		
04-07	1	Roller Assembly	Roller Assembly includes #4 through #7. Non-DEF reels, order: <b>TIM-3600-4</b> DEF reels, order: <b>TBD</b>		
17-23	1	Ratchet Assembly	Ratchet Assembly includes #17 through #23, order: <b>TIM-3600-14</b>		
22	1	Spring Dog	Spring #22 is included in the Ratchet Assembly above but is also sold individually, order: <b>TIM-3600-22</b>		
25	1	Locking Ring	<b>TIM-3600-16</b>		
26	1	Hub Bearing	<b>TIM-3600-17</b>		
30	3	Nut	<b>TIM-3600-21</b>		
31-37	1	Rewind Spring Assy.	Reel	Rewind Spring Assembly includes #31 through #17, order:	
			TIM-3616-50	<b>TIM-3600-23</b>	
			TIM-3616-65	<b>TIM-3600-24</b>	
			TIM-3618-50	<b>TIM-3600-25</b>	
			TIM-3618-65	<b>TIM-3600-26</b>	
			TIM-3628-25	<b>TIM-3600-29</b>	
			TIM-3628-50	<b>TIM-3600-27</b>	
			TIM-3636-50	<b>TIM-3600-30</b>	
			TIM-3636-65	<b>TIM-3600-31</b>	
TIM-DEF-52H33S	<b>Not Available</b>				
40-44	1	Swivel Assembly	Reel	Swivel Assembly includes #40 through #44, order:	
			TIM-3616-xx	<b>TIM-3600-32</b>	
			TIM-3618-xx	<b>TIM-3600-34</b> NOTE: O-ring swivel seal kit is available, order: <b>TIM-OILSWIV-KIT</b>	
			TIM-3628-xx	<b>TIM-3600-34</b> NOTE: O-ring swivel seal kit is available, order: <b>TIM-OILSWIV-KIT</b>	
			TIM-3636-xx	<b>TIM-3600-36</b>	
			TIM-DEF-52HxxS	<b>Not Available</b>	
47	1	Hose, Delivery NOTE: Connection hose is not shown in the illustration	Reel	Delivery Hose, order:	Connection Hose, order:
			TIM-3616-50	<b>TIM-4216-50</b>	<b>TIM-4216-2N</b>
			TIM-3616-65	<b>TIM-4216-65</b>	<b>TIM-4216-2N</b>
			TIM-3618-50	<b>TIM-4208-50S</b>	<b>TIM-4218-2N</b>
			TIM-3618-65	<b>TIM-4208-65S</b>	<b>TIM-4218-2N</b>
			TIM-3628-25	<b>TIM-4418-25S</b>	<b>TIM-4418-2NS</b>
			TIM-3628-50	<b>TIM-4418-50S</b>	<b>TIM-4418-2NS</b>
			TIM-3628-65	<b>TIM-4418-65S</b>	<b>TIM-4418-2NS</b>
			TIM-3636-50	<b>TIM-4506-50S</b>	<b>TIM-4516-2N</b>
			TIM-3636-65	<b>TIM-4506-65S</b>	<b>TIM-4516-2N</b>
TIM-DEF-52H33S	<b>DEF-33FHS</b>	<b>DEF-31 (per foot)</b>			
48-50	1	Hose Stop Assembly	3/8" Air/Grease hose, order: <b>TIM-131-3</b> 1/2" Air/Oil hose, order: <b>TIM-131-4</b> DEF hose, order: <b>TIM-430</b>		
51	2	Hose Clamp	Non-DEF reels, order: <b>TIM-HOSE-CLMP</b> DEF Reels, order: <b>TIM-CLAMP-18</b>		
53	2	Nut	<b>TIM-3600-42</b>		
N/A	1	Hose Protection Spring	Non-DEF reels, order: <b>TIM-238-1</b> DEF Reels, order: <b>TIM-398-1</b>		

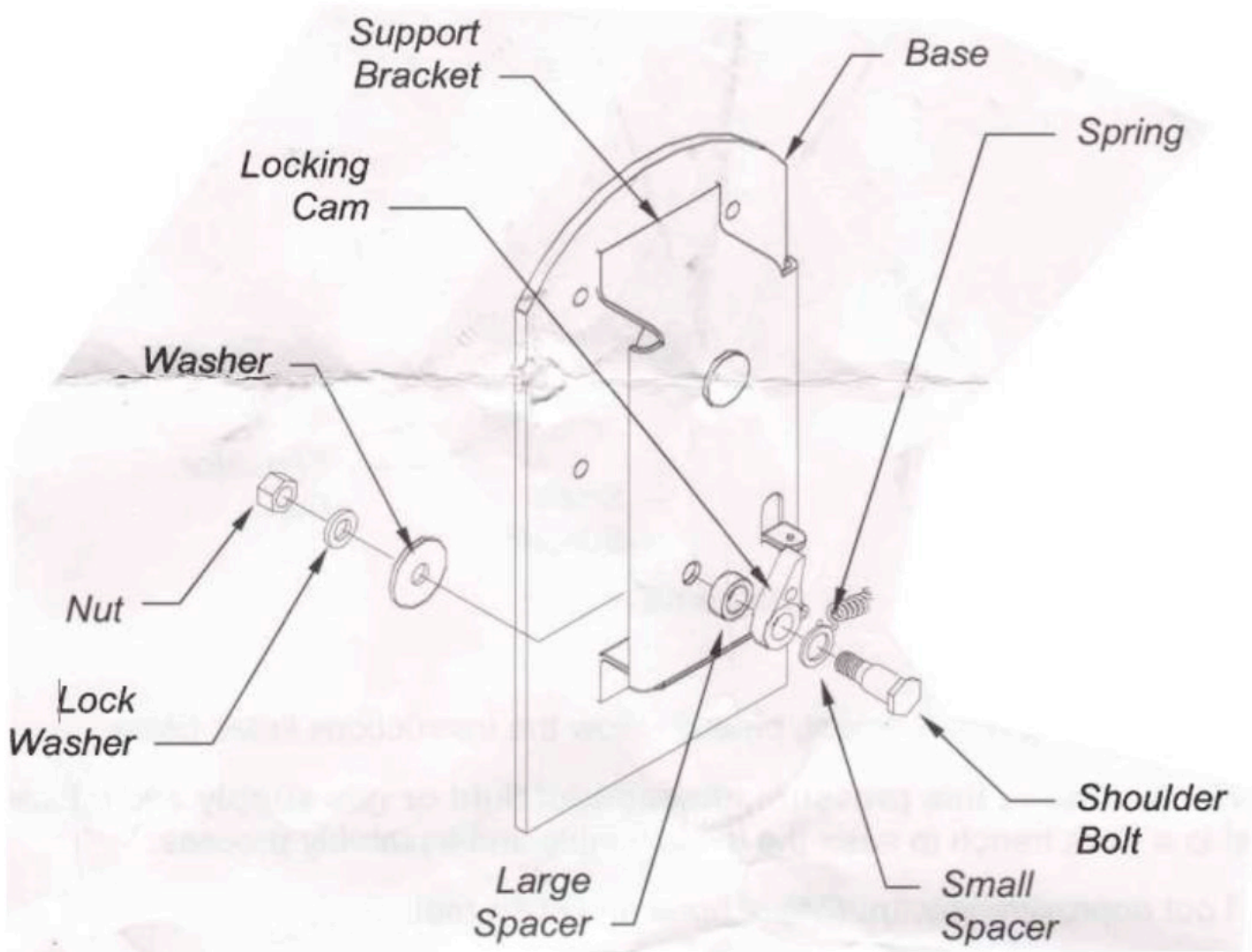
For pricing and ordering information, please call 410-252-9300 and press 2 or email [CustomerService@americanlube.com](mailto:CustomerService@americanlube.com).

# ADVANTAGE PLUS TIM-3600 SERIES REELS

## TIM-3600-14 Ratchet Assembly Replacement

Replacement procedure:

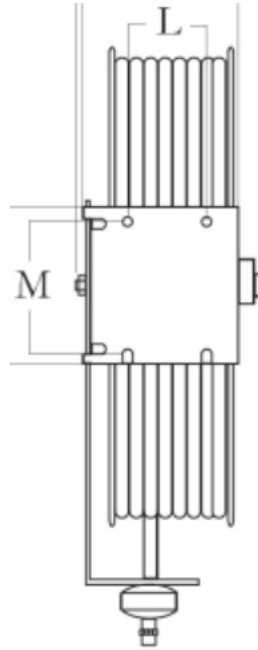
1. Remove fluid pressure.
2. Pull 3' of hose out of reel.
3. Remove control handle, hose stop, etc.
4. Relieve all recoil spring tension by slowly retracting the hose into the reel.
5. Remove swivel retaining ring and spacer.
6. Slide drum off axle.
7. Replace old parts with new TIM-3600-14 kit parts (cam, spring, bolt, etc.).
8. Reassemble.
9. Tension reel by turning the drum three complete turns.
10. Latch drum.
11. Reassemble hose stop, etc.



# ADVANTAGE PLUS TIM-3600 SERIES REELS

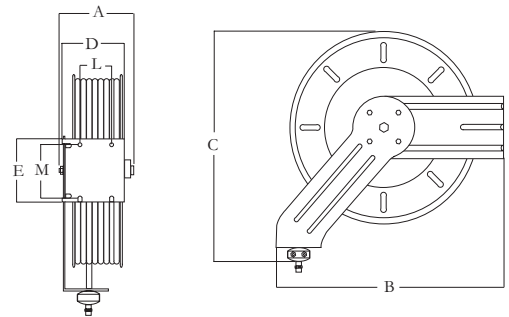
## Mounting Hole Dimensions

L = 3-1/2"; M = 7-1/2"



## SIZE INDEX CHART

A	B	C	D	E	Mount L-M
8-7/16"	21-1/2"	20-5/8"	5-3/4"	9"	3-1/2" x 7-1/2"

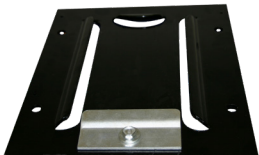


14' maximum mounting height

## Optional Side-In Mounting Bracket

- 12.75" length, holes center to center = 6.75";
- 10.5" width, holes center to center = 8-7/8"

## OPTIONAL SLIDE-IN MOUNTING BRACKET



### TIM-3600-50

12-3/4" L x 10-1/2" W slide-in mounting bracket simplifies reel mounting by allowing for one man installations. Easily mounts to Uni-Strut® using Uni-Strut® hardware (not included). Can also be mounted by drilling and fastening to an I-Beam or H-Beam (fastening hardware not included). 1/8" steel construction.

# ADVANTAGE PLUS TIM-3600 SERIES REELS

## Base replacement procedure:

1. Note: Can be done on scissors lift in the ceiling.
2. Remove system air pressure.
3. Remove control valve and hose stop.
4. Allow hose to retract completely.
5. Remove air line from swivel.
6. Remove 7/8" axle nut.
7. Pull hub off base.
8. Assemble stop dog assembly on new base.
9. Remove old base.
10. Using new base, reverse disassembly procedure to reassemble.

## Rewind Spring Assembly Removal and Replacement.

1. Disconnect air and oil.
2. Remove gun and hose stop.
3. Allow hose to fully retract into reel. NOTE: Typically, the retraction is about four rotations past the hose stop. The retraction unloads/releases the spring motor tension.
4. Remove swivel.
5. Remove axle snap ring and axle washer.
6. Remove reel hub (with delivery hose, rewind spring assembly, etc.) from the reel base. NOTE: Axle stays on base.
7. Remove four nuts that protrude from the far side (side opposite the rewind spring canister) of the hub. The four nuts screw onto studs protruding from the interior side of the rewind spring canister. The four nuts attach the rewind spring canister to the reel hub.

**WARNING:** Exposure of the encapsulated/enclosed rewind spring could result in severe bodily injury. The canister must remain sealed/complete/intact. Do not remove the nuts on the exterior face of the rewind spring canister.

8. Remove the complete/intact rewind spring canister and replace the rewind spring canister.
9. Reassemble the reel and adjust rewind spring tension as appropriate.

