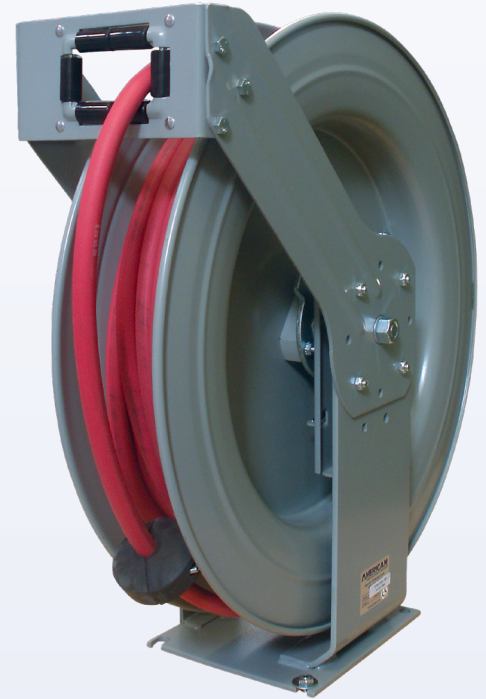


Data Sheet, TIM-3106-100P Hose Reel (Platinum Series Premium Double-Arm)

Low Pressure (300 PSI), powder-coated, double-arm reel,
3/8" x 100' delivery hose

- **HOSE:**
 - Working pressure, 300 PSI maximum
- **SHIPPING:**
 - One box
 - *Weight:* 85 pounds
 - *Dimensions:* 9.25" x 25.5" x 23"
- **COMPATIBILITY:**
 - Air
 - Water
- **MAXIMUM MOUNTING HEIGHT:**
 - 14' above floor
- **MOUNTING BASE HOLE PATTERN:**
 - 7" x 8"
 - Four holes for 3/8", Grade 5 hardware
- **THREADS:**
 - *Swivel:* 3/8" NPT (F x F)
 - *Delivery Hose:* 3/8" NPT (M x M)
- **WARRANTY (*Defects in material and workmanship, non-wear parts*):**
 - Five years for hardware
 - One year for hose
- **ACCESSORIES:**
 - AIR-HP3838-2 Connecting Hose, 3/8" x 3/8" NPT (M x M), 300 PSI, 2' rubber hose
- **INSTALLATION RECOMMENDATIONS:**
 - Two parallel runs of, Kindorf Strut Channel affixed to steel roofing supports. Four each, 3/8", Grade 5 bolts, flat/lock washers and Kindorf Spring Nuts *per Kindorf pair*
 - Typical mounting bolt specifications: Grade 5, 3/8-16, 1-1/2" (length as required)
 - Keep reel and associated plumbing away from heat sources
 - Plumbing, 1/2" diameter, K-Copper plumbing with copper or brass fittings
 - Three wraps Teflon tape followed by pipe dope



Reel Dimensions In Inches						
Size Index	A	B	C	D	E	Mount L-M
1	9-1/4"	25-1/2"	23"	8"	9"	7" x 8"

