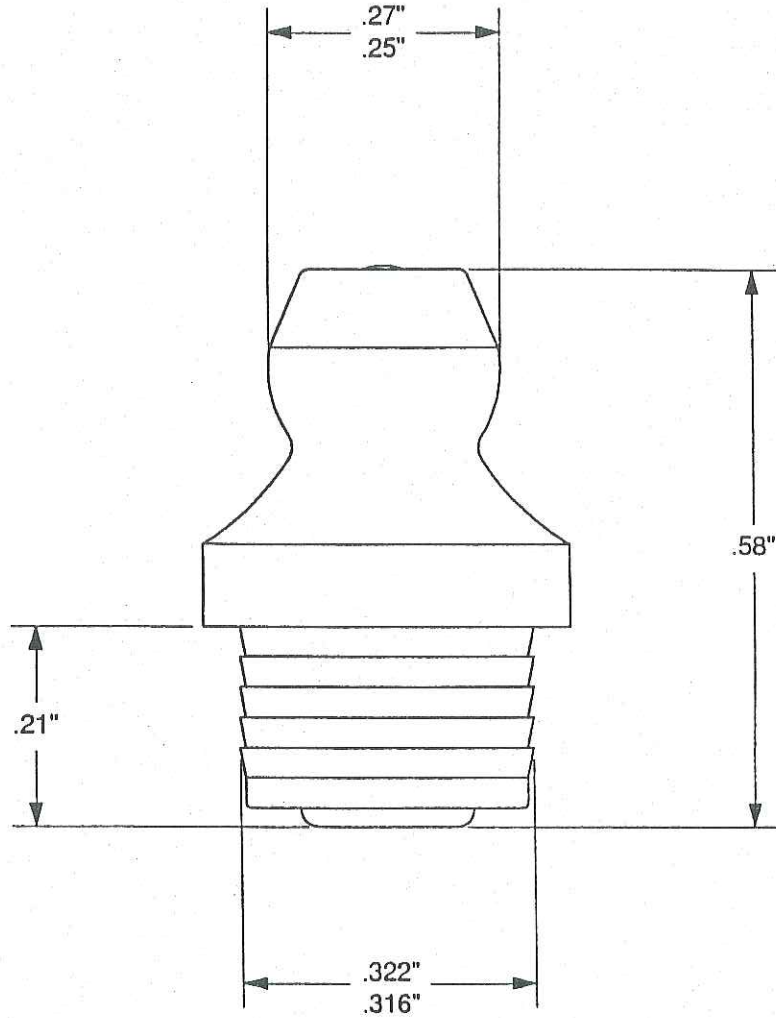


AMERICAN

LUBRICATION EQUIPMENT CORPORATION



SEE NOTE



ACTUAL SIZE

NOTE
 SUITABLE FOR A 5/16" DIA.
 NOMINAL HOLE SIZE.
 THIS IS FOR GUIDANCE ONLY.
 ACTUAL SIZE MUST BE DETERMINED
 BY TEST DRILLING

DESCRIPTION DRIVE FIT STRAIGHT HYDRAULIC GREASE FITTING WITH CHECK VALVE			AMERICAN LUB. CODE No. T7609
MATERIAL 25/64" ROUND DIA. 230 M07 Pb MILD STEEL	HEAT TREATMENT CASE HARDENED	SURFACE TREATMENT ZINC PLATED YELLOW CHROMATED	TOLERANCE ±.030" UNLESS OTHERWISE STATED
CAD DRAWING SCALE 5:1	COMPILER & DATE R.H. 22.09.92	CHECKED BY & DATE J.A.F. 16.11.92	ISSUE DATE -1. FEB. 1992