

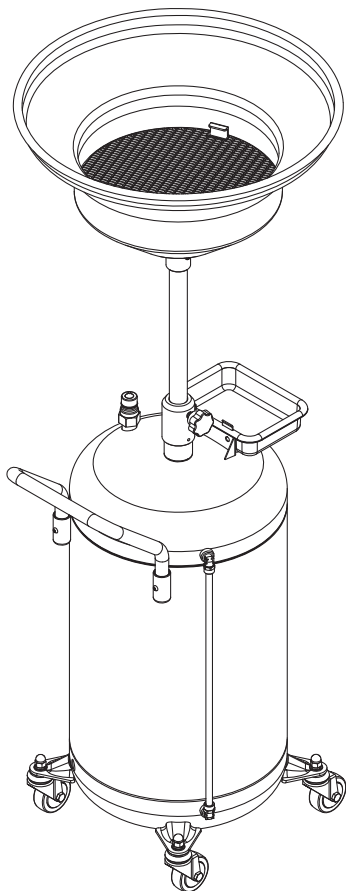
---

# AMERICAN

LUBRICATION EQUIPMENT CORPORATION®

AMERICAN LUBRICATION EQUIPMENT CORPORATION  
11212A MCCORMICK ROAD, HUNT VALLEY, MD 21031  
WWW.AMERICANLUBE.COM  
CONTACT: 410-252-9300

## TIM-315-COMP2 WASTE OIL DRAIN MANUAL



*Superior Technology at an Affordable Price®*



## WARNING

Read carefully and understand all INSTRUCTIONS before operating. Failure to follow the safety rules and other basic safety precautions may result in serious personal injury. Save these instructions in a safe place and on hand so that they can be read when required. Keep these instructions to assist in future servicing.



## SAFETY PRECAUTIONS

### GENERAL SAFETY RULES

**WARNING: Read and understand all instructions.**

**WARNING: The warnings, cautions, and instructions discussed in this instruction manual cannot cover all possible conditions or situations that could occur.** It must be understood by the operator that common sense and caution are factors which cannot be built into this product, but must be supplied by the operator.



## WARNING

- For waste oil use only.
- Do not expose the reservoir to any source of heat.
- While extracting high temperature oils, keep hands and face protected.
- Only use the device for the purpose for which it has been designed.
- Do not modify any component of the equipment.
- Only use original spare parts.

## Assembly

**Fig.1:** Insert the handle (B) into its seat and secure it with the screws provided. Position the tool tray (A).

**Fig.2:** Attach drain tube (C) to drain bowl (D) and lock into place by tightening the hex nut.

**Fig.3:** Using a suitable wrench, connect the assembly from step 2 to the reservoir tank by tightening the collar (E).

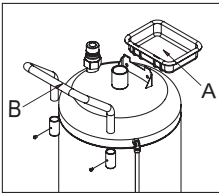


Fig.1

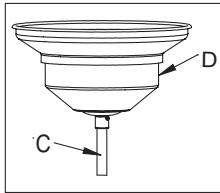


Fig.2

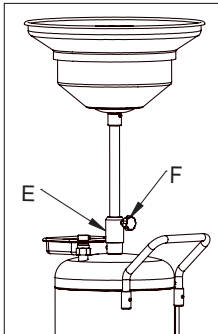


Fig.3

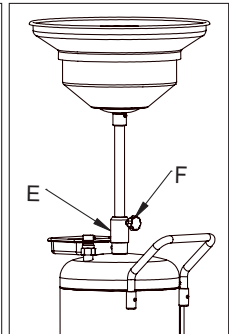


Fig.4

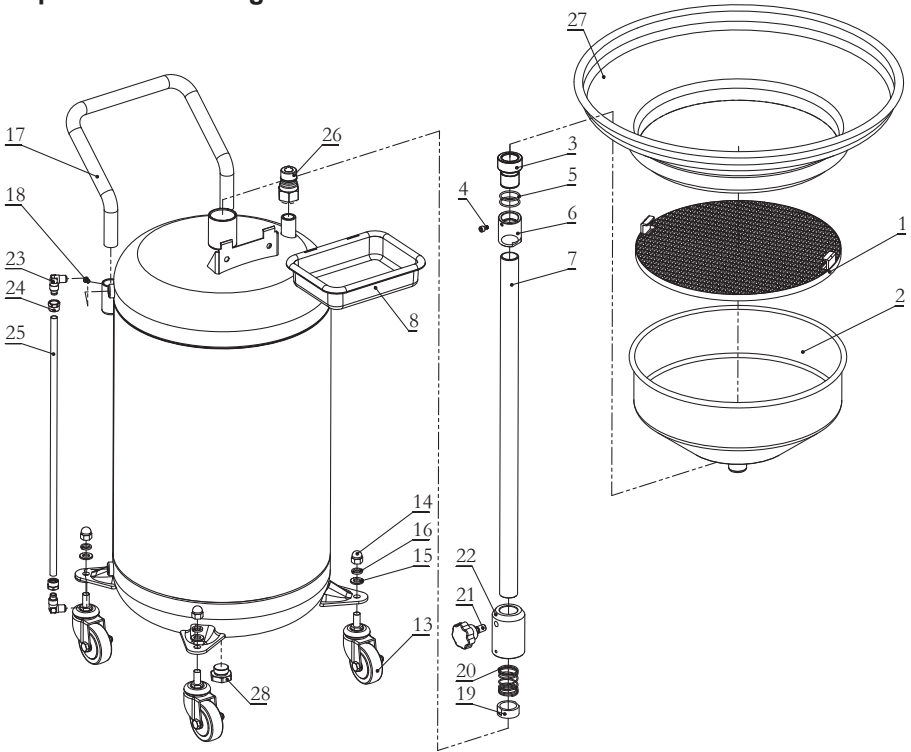
## Operation

**Fig.4:** To raise and lower the catch basin loosen knob (F), move the basin to the desired height and re-tighten knob (F).



**CAUTION:** Never fill the reservoir over the maximum level indicated by the gauge that is located on the side of the reservoir

# Exploded Parts Diagram and Parts List



No.	QTY	Description	Part No.	No.	QTY	Description	Part No.
1	1	Filter	TIM-317-38	17	1	Handle	TIM-317-20
2	1	Funnel 1" BSP (M)	TIM-317-37C	18	2	Screw M6x1	TIM-317-17
3	1	Rotor 1"BSP (Male)	TIM-317-36	19	1	Nut 1"BSP	TIM-317-30
4	1	Set Screw M6x1 (Each)	TIM-317-34	20	1	Spring	TIM-317-29
5	2	O-ring 32.9mm IDx2.6mm DIA (Pair)	TIM-317-35H	21	1	Knob M12x1.75	TIM-317-26
6	1	Rotor 1"BSP (Female)	TIM-315-6	*22	1	Seat M52x2 & M12x1.75	TIM-315-22
7	1	Tube 1"BSPT	TIM-317-31	23	2	Elbow (Each)	TIM-317-7
8	1	Tool Tray	TIM-317-24	24	2	Nut (Each)	TIM-317-8
*13	4	Casters Sold As Pair	TIM-317-4	25	1	Tube With Label	TIM-317-9
14	4	Acorn Nut M12x1.75 (Each)	TIM-317-6	26	1	Connector 3/4" NPT (F)	TIM-181
15	4	Plain Washer (Each)	TIM-317-5	27	1	Funnel Extender	TIM-317-39
16	4	Spring Washer (Each)	TIM-317-41	28	1	Plug With O-ring 3/4"BSP	TIM-317-PLUG

\* TIM-317-4 caster bag includes two each of the following: wheels, flat washers, lock washers, nuts.

\* TIM-315-22 contains two vent holes for pump suction.

## Exploded Parts Diagram

No.	QTY	Description
3	1	Rotor (Male)
5	2	O-ring
4	1	Set Screw
6	1	Rotor (Female)
7	1	Tube
22	1	Seat
21	1	Knob
20	1	Spring
19	1	Nut

