
AMERICAN

LUBRICATION EQUIPMENT CORPORATION®

AMERICAN LUBRICATION EQUIPMENT CORPORATION
11212A MCCORMICK ROAD, HUNT VALLEY, MD 21031
WWW.AMERICANLUBE.COM
CONTACT: 410-252-9300

TIM-340

AIR OPERATED OIL CHANGER



Superior Technology at an Affordable Price®



WARNING

Read carefully and understand all INSTRUCTIONS before operating. Failure to follow the safety rules and other basic safety precautions may result in serious personal injury.

Save these instructions in a safe place and on hand so that they can be read when required. Keep these instructions to assist in future servicing.



SAFETY PRECAUTIONS

GENERAL SAFETY RULES

WARNING: Read and understand all instructions.

WARNING: The warnings, cautions, and instructions discussed in this instruction manual cannot cover all possible conditions or situations that could occur. It must be understood by the operator that common sense and caution are factors which cannot be built into this product, but must be supplied by the operator.



WARNING

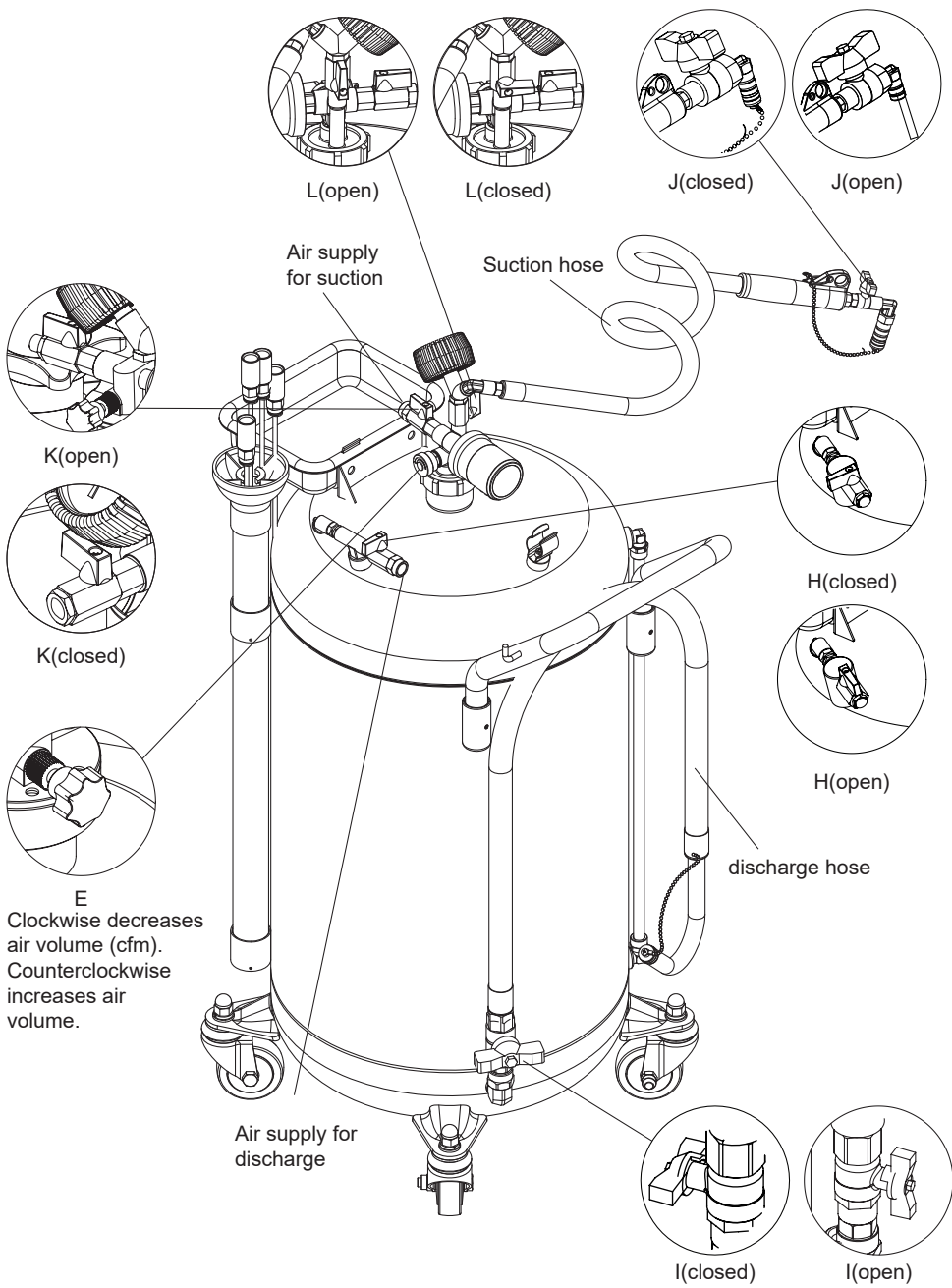
- Do not extract caustic or flammable products.
- Do not expose the reservoir to any source of heat.
- While extracting high temperature oils, keep hands and face protected.
- Only use the device for the purpose for which it has been designed.
- Do not modify any component of the equipment.
- Only use original spare parts.

PRODUCT DATA

Item No.	TIM-340
Air Inlet	1/4"NPT
Capacity	90L/24Gal

- Maximum air pressure for suction: 7~8bar/100~115psi
- Maximum air pressure for discharge: 1 bar/14psi
- Suction speed: (oil temperature <194°F/90°C , suction tube diameterΦ6mm): 2 lpm/0.5gpm
- Suction hose length: 2000mm/78.7"
- Discharge hose length: 2000mm/78.7"

ASSEMBLY



ASSEMBLY

Fig.1: Assemble the handle(B) and the air inlet fitting, close the ball valve(H).

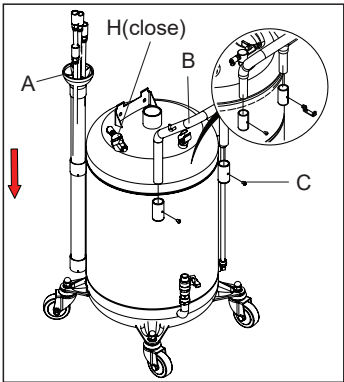
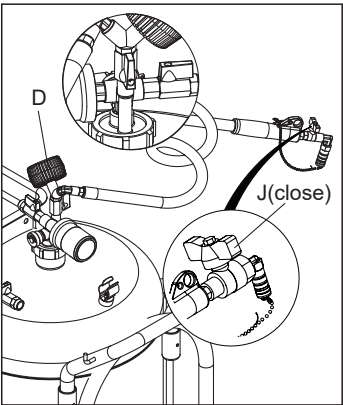


Fig.2: Assemble the vacuum gauge(D) and close the ball valve(J).



OPERATION EVACUATION

Fig.3: Close all the valves (K, J, H, I, L). Open the handwheel (E) counterclockwise direction and open the valve (L).

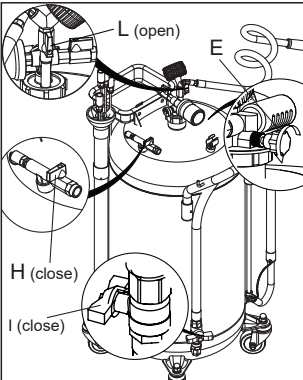


Fig. 4: Connect the air supply, open valve (K) and adjust (E) to make the vacuum gauge (F) index reach the green area.

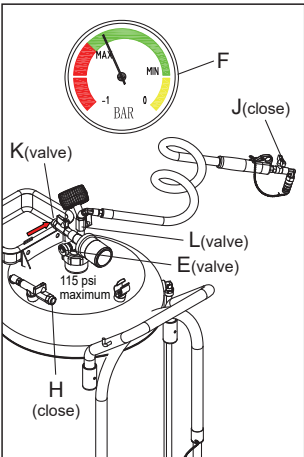
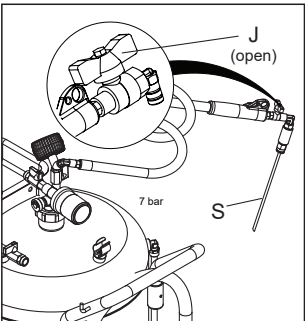


Fig.5: Connect the probe (S), then put it into the car engine, open the ball valve (J) for suction of oil.



DISCHARGE

Fig.6: Close all the valves (K, J, H, I, L).

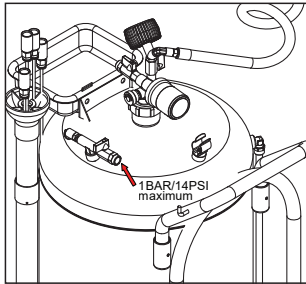


Fig.8: Connect the air supply, and open the valve (H) for discharge.

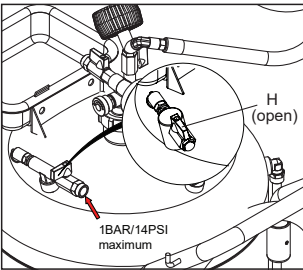
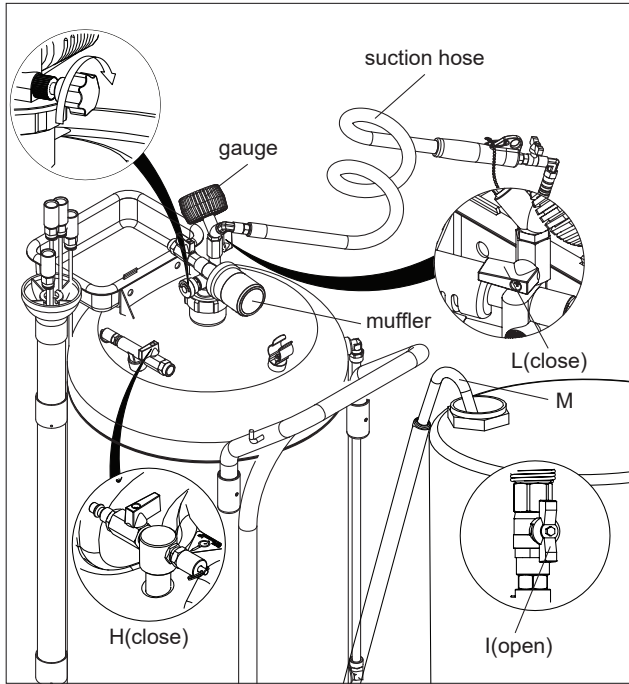


Fig. 7: Close the handwheel (E) clockwise direction, put the spout (M) into the waste oil tank, then open the valve (I).



TROUBLE SHOOTING GUIDE

Problem	Cause	Solution
The index on vacuum gauge can't reach the green area.	1. Air supply pressure is too low. 2. Air flow is not enough.	1. Increase the air supply pressure. 2. Increase air flow.
The vacuum gauge index reaches the green area, but oil isn't evacuated.	1. Oil temperature is too low. 2. The suction hose, valve or fitting is jammed.	1. Increase the oil temperature 2. Clean or replace suction hose, valve or fitting.
The vacuum gauge shows leakage and can't suction the oil.	1.O-ring of the suction fitting is broken. 2. The bottom of the suction hose is higher than the oil level.	1. Change the O-ring. 2. Keep the suction hose straight and ensure the hose is immersed in the oil.

CAUTION

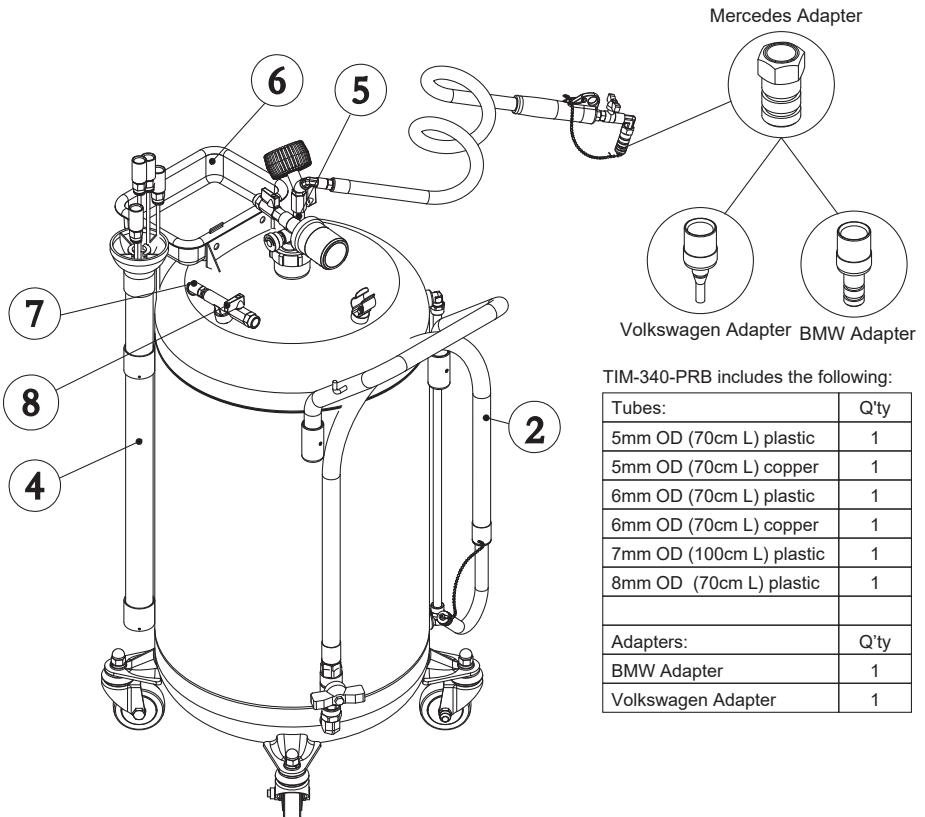
- Never fill the reservoir over the maximum level indicated by the gauge that is located on the side of the reservoir.
- Don't exceed maximum pressure 1bar/14psi for discharge.
- Air pressure for vacuum is maximum 8bar/115psi.
- Open the bottom nut of the reservoir periodically and clean out any dirt.

EXPLODED & PART LIST

Pos. No.	Description	Item No.	Q'ty
2	Discharge Hose 1/2" BSP	TIM-340-HOSE	1
4	Probe Assembly	TIM-340-PRB	1
5	Vacuum assembly	TIM-340-VAC	1
6	Tool tray	TIM-317-24	1
7	Safety Valve 1/4" BSPT	TIM-317-23	1
8	Valve Assy 1/4" NPT (F)	TIM-317-43	1

Note:

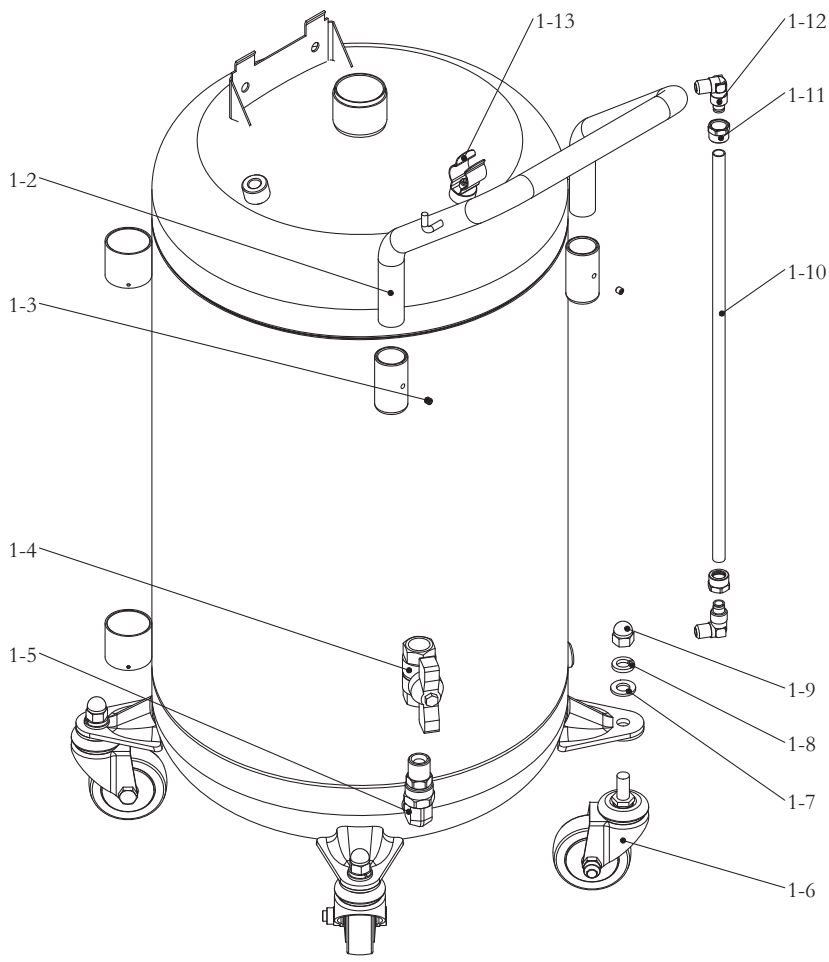
1. Probe Assembly #4 includes probes, BMW and Volkswagen adapters, and storage tube.
2. Vacuum Assembly #5 includes gauge, manifold, valves, muffler, hose, Mercedes adapter, dust plug with chain.
3. Wear item O-ring kit for Mercedes/Volkswagen /BMW adapters, TIM-340-ORNG.



TIM-340-PRB includes the following:

Tubes:	Q'ty
5mm OD (70cm L) plastic	1
5mm OD (70cm L) copper	1
6mm OD (70cm L) plastic	1
6mm OD (70cm L) copper	1
7mm OD (100cm L) plastic	1
8mm OD (70cm L) plastic	1
Adapters:	Q'ty
BMW Adapter	1
Volkswagen Adapter	1

RESERVOIR & PART LIST



Pos. No.	Description	Item No.	Q'ty	Pos. No.	Description	Item No.	Q'ty
1-2	Handle	TIM-317-20	1	1-8	Spring washer (each)	TIM-317-41	4
1-3	Screw M6x1	TIM-317-17	2	1-9	Acorn nut M12x1.75 (Pair)	TIM-317-6	4
1-4	Valve 1/2" BSP (F) x BSP (M)	Not Available	1	1-10	Tube with label	TIM-317-9	1
1-5	Swivel fitting	Not Available	1	1-11	Nut threads M16x1 (each)	TIM-317-8	2
*1-6	Caster (sold as pair)	TIM-317-4	4	1-12	Elbow M16x1 (each)	TIM-317-7	2
1-7	Plain washer (each)	TIM-317-5	4	1-13	Hose clip	TIM-317-19	1

* TIM-317-4 Caster bag includes two each of the following: wheels, flat washers, lock washers, acorn nuts.

