
AMERICAN

LUBRICATION EQUIPMENT CORPORATION®

AMERICAN LUBRICATION EQUIPMENT CORPORATION
11212A MCCORMICK ROAD, HUNT VALLEY, MD 21031
WWW.AMERICANLUBE.COM
CONTACT: 410-252-9300

TIM-390-A1 OIL DISPENSING CART MANUAL



Superior Technology at an Affordable Price®



WARNING

Read carefully and understand all INSTRUCTIONS before operating. Failure to follow the safety rules and other basic safety precautions may result in serious personal injury. Save these instructions in a safe place and on hand so that they can be read when required. Keep these instructions to assist in future servicing.



SAFETY PRECAUTIONS

GENERAL SAFETY RULES

WARNING: Read and understand all instructions.

WARNING: The warnings, cautions, and instructions discussed in this instruction manual cannot cover all possible conditions or situations that could occur. It must be understood by the operator that common sense and caution are factors which cannot be built into this product, but must be supplied by the operator.



WARNING

- Do not deliver corrosive or flammable liquids.
- Do not expose the tank to heat sources
- Do not weld only use the appliance for its intended purpose.

SPECIFICATIONS

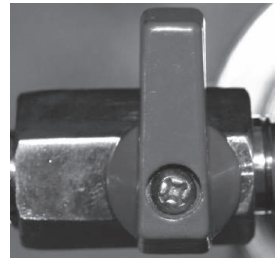
1. Inlet Air Pressure: 115 PSI Maximum
2. Operation Pressure: 100 PSI Maximum
3. Reservoir Capacity: 23.75 Gallons

ASSEMBLY

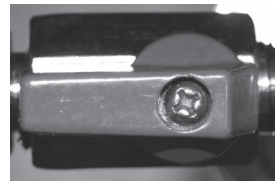
Assemble hose, control handle, etc. with Teflon tape and pipe dope.

CHARGING THE DISPENSER WITH AIR

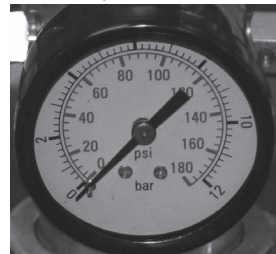
1. Regulate the air supply hose that you are using to charge the dispensing unit to 100 PSI maximum.
2. Make sure the air shutoff valve (See Diagram) on the dispensing unit is in the "Closed" position. (see picture 1)
3. Connect the air supply hose to the air connector on the top of the tank.
4. Turn the air shutoff valve to the "Open" position (see picture 2 and Diagram).
5. When the pressure gauge on the dispenser (see picture 3) reaches 100 PSI, turn the air shutoff valve (See Diagram) on the dispensing unit to the "Closed" position (see picture 1). Do not attempt to over-charge the unit with more than 100 PSI.
6. Remove the air supply hose from the air connector on the top of the tank.



picture 1

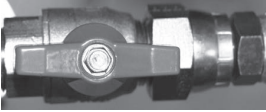


picture 2



picture 3

7. Make sure that the oil shutoff valve (See Page 4) is in the “Open” position (see picture 4). The oil shutoff valve is for servicing the unit only, thus it should always be left in the “Open” position.
8. Open the non-drip tip on the meter (see picture 5). Place the tip of the meter into a container used for waste oil. Pull the trigger on the digital meter to prime the oil hose and meter. This will bleed off any air in the dispensing system.
9. Close the non-drip tip on the meter (see picture 5).
10. Reset the digital meter to zero.
11. The unit is now ready for dispensing. When the oil delivery rate falls below an acceptable level, recharge the air pressure in the unit by repeating steps 1-7 above.



picture 4



picture 5

SERVICE

1. Make sure that the unit is not connected to an air hose and that the air connector is not obstructed before servicing.
2. Make sure the unit is not pressurized. Turn the air shutoff valve (the valve with the red knob) to the “Open” position (see picture 2) to bleed off any pressure inside the unit.



CAUTION:

Be careful not to place your eyes or anything else in the way of the air connector while draining the air pressure. The air gauge must read “0” before attempting to remove the fill cap.

3. Remove the fill cap.
4. It is now safe to perform service work on the unit.

OPERATION

This unit allows for oil dispense directly from the pressurized container through a digital meter at approximately 8 quarts per minute. The unit uses air pressure to dispense oils. The dispenser holds 23 gallons and is refillable through the top fill cap. The unit incorporates a sight gauge that allows the user to monitor the oil capacity. A safety pop-off valve is standard on the unit.



WARNINGS:

1. The unit is pressurized with approximately 100 PSI. Do not attempt to remove the fill cap or service the dispenser when the unit is pressurized. The unit’s air gauge must read “0” before attempting to remove the fill cap.
2. Do not overcharge the unit. 100 PSI is the maximum working pressure. Overcharging the unit can result in serious injury.
3. Do not attempt to alter, obstruct or remove the calibrated safety pop-off valve. It is factory preset and cannot be adjusted. If the valve becomes damaged, discontinue using the unit and call for service immediately. Failure to do so could cause serious injury.
4. Do not run the unit dry. The digital meter will read air coming through the dispense hose. Consistently monitor the oil level via the sight gauge located on the side of the unit.
5. It is important that the unit is filled with air that is free of contamination. It is strongly recommended that the air source has a drop-leg water trap.

FILLING THE DISPENSER WITH OIL

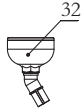
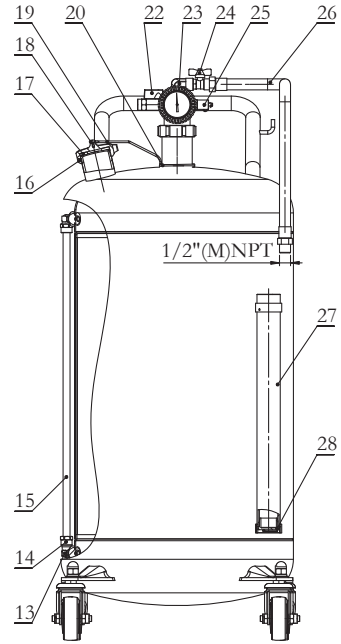
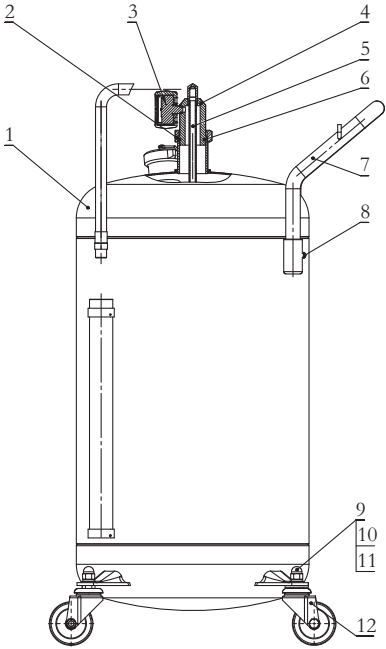
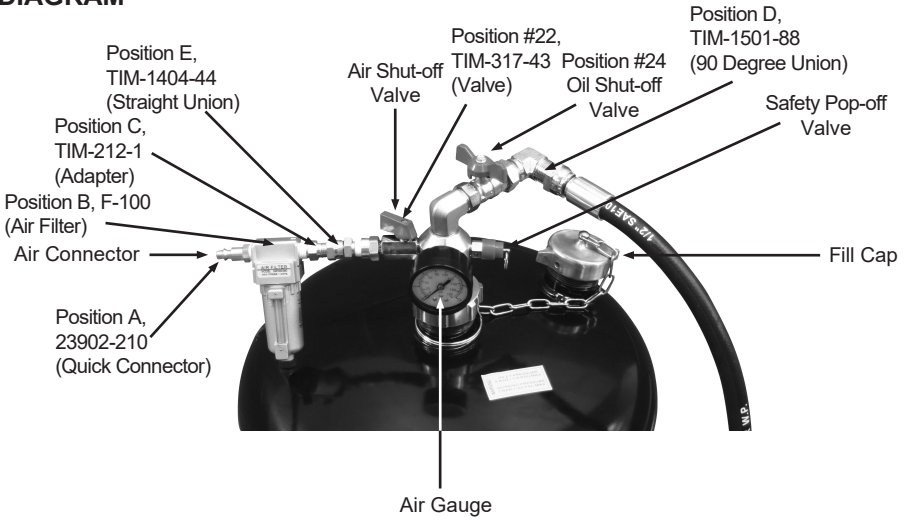
1. Make sure that the unit is not connected to an air supply source and that the air connector on the unit is not obstructed.

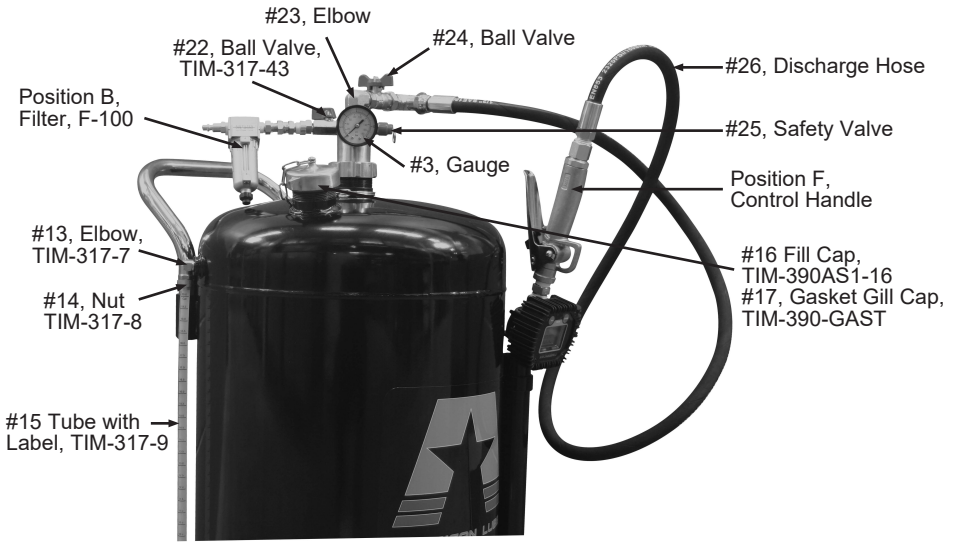
⚠ CAUTION:

2. Make sure the unit is not pressurized. Turn the air shutoff valve (See Diagram) to the "Open" position (see picture 2) to bleed off any pressure inside the unit. Do not place your eyes or anything else in the way of the air connector when the air pressure is draining. The units' air gauge must read "0" before attempting to remove the fill cap.
3. Remove the top fill cap from the unit.
4. Utilizing the funnel supplied, fill the unit to the point where the side mounted sight gauge is completely filled with oil.
5. Replace the fill cap tightly.



DIAGRAM





Position #	QTY	Description	Part Number
1	1	Reservoir	N/A
2	1	Round Nut w/ Collar	N/A
3	1	Gauge 1/8" BSP (M)	N/A
4	1	Seat	N/A
5	1	Steel Tube	N/A
6	1	O-ring (42.5mm IDx2.65mm DIA)	N/A
7	1	Handle w/ hook	TIM-317-20
8	2	Screw w/ Chamfered End (M6x1)	TIM-317-17
9	4	Acorn Nut M12x1.75 (Each)	TIM-317-6
10	4	Spring Washer (Each)	TIM-317-41
11	4	Plain Washer (Each)	TIM-317-5
*12	2	Swivel/Caster Wheel (sold as pair)	TIM-317-4
13	2	Elbow (Each)	TIM-317-7
14	2	Nut (Each)	TIM-317-8
15	1	Tube with Label	TIM-317-9
16	1	Fill Cap	TIM-390AS1-16
17	1	Gasket, Fill Cap	TIM-390-GAST
18	1	Hex Head Screw (M5x0.8)	N/A
19	1	Chain	N/A
20	1	Steel Ring	N/A
22	1	Valve, 1/4" NPT (M x F)	TIM-317-43
23	1	Elbow Adapter	N/A
24	1	Valve, 1/2" NPT (M x F)	TIM-390-24
25	1	Safety Valve, 115 psi (1/4" BSPT)	N/A
26	1	Hose, 1/2" NPT x 6', (F-swivel x M)	TIM-390-HOSE
27-28	1	Tube with Cap	TIM-390-30
32	1	Funnel	N/A
A	1	Quick Connector, 1/4" NPT (M)	23902-210
B	1	Air Filter 1/4" NPT (FxF)	F-100
C	1	Close Pipe Nipple, 1/4" NPT (MxM)	TIM-212-1
D	1	90 Degree Union Adapter 1/2" NPT (FxM)	TIM-1501-88
E	1	Straight Union, 1/4" NPT (FxM)	TIM-1404-44
F	1	Digital Meter Control Handle	TIM-601-FM

* Note: For early production TIM-390-A1 models with two fixed wheels and two caster wheels, for replacement fixed wheels, order part number: TIM-317-2 (sold as pair).

