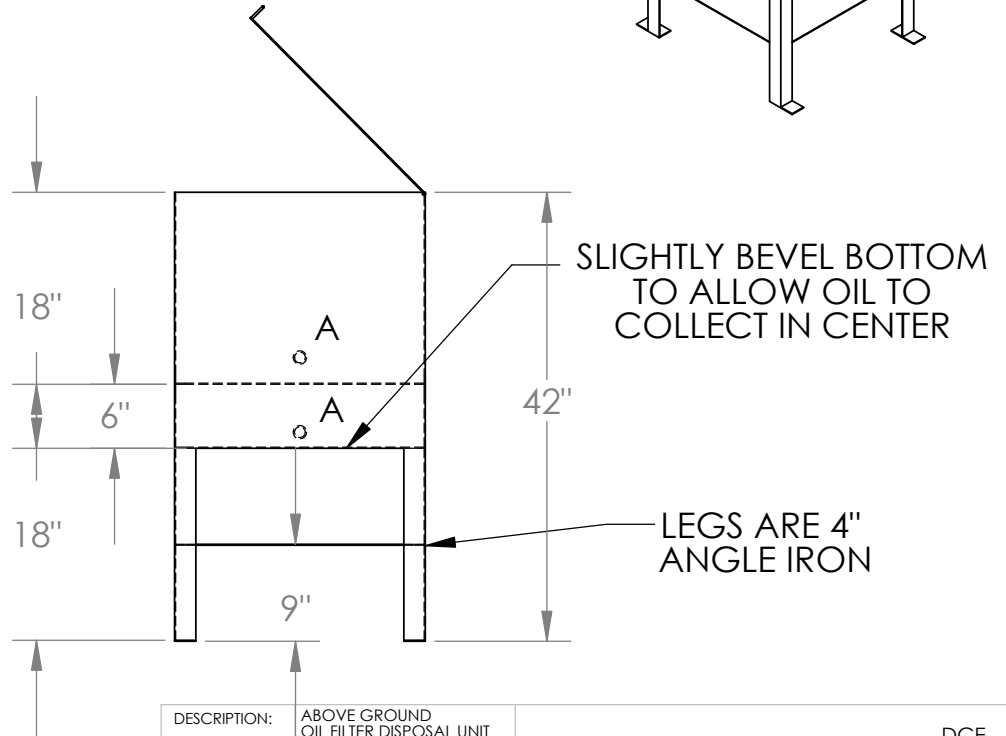
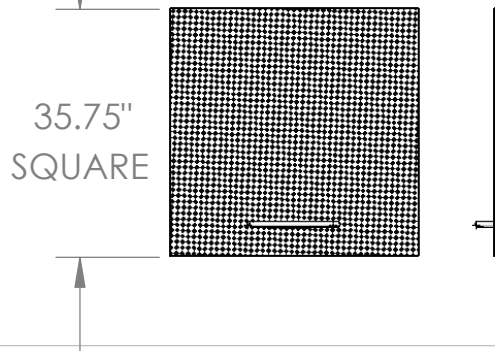


HINGED LID WITH  
TWO GAS LINE STRUTS  
(NOT SHOWN)



EXPANDED METAL  
PLATFORM  
TO ALLOW  
OIL TO DRAIN



DESCRIPTION:	ABOVE GROUND OIL FILTER DISPOSAL UNIT
MATERIAL:	12 GA.
CONSTRUCTION:	WELDED USING UL-142 STANDARDS
OPENINGS:	1" NPTF WASTE OIL PUMP 1" NPTF FILTER CRUSHER OPEN TOP
FINISH:	SURFACE PREP: SPCC SP-3 FINISH PAINT

**AMERICAN**  
LUBRICATION EQUIPMENT CORPORATION  
(410)-252-9300  
americanlube.com

DCE 4/16/2015	
TITLE: <b>OIL FILTER DISPOSAL CONTAINER</b>	
SIZE <b>A</b>	LEGEND: A - 1" NPTF
SCALE: 1:18	APPROVAL: