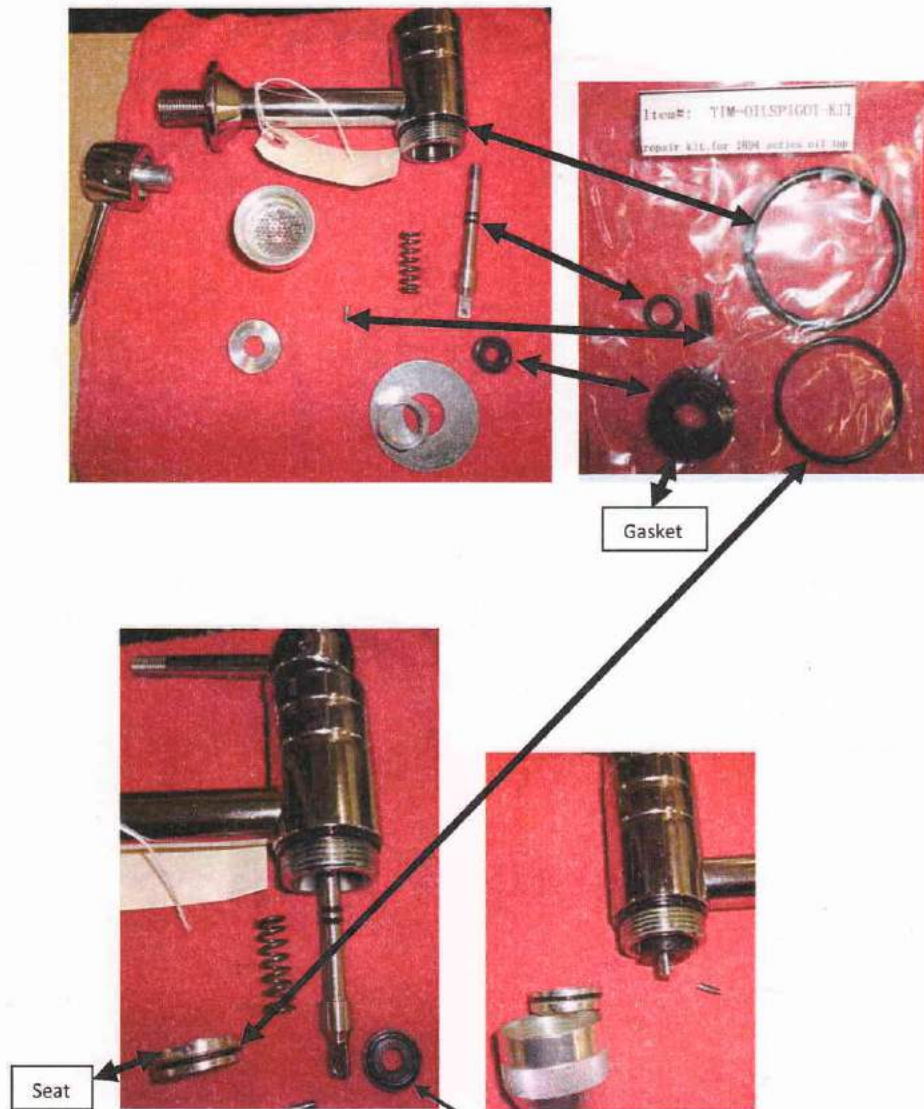


TIM-OILSPIGOT-KIT

(Used for TIM-5-A2 and TIM-724-1B)



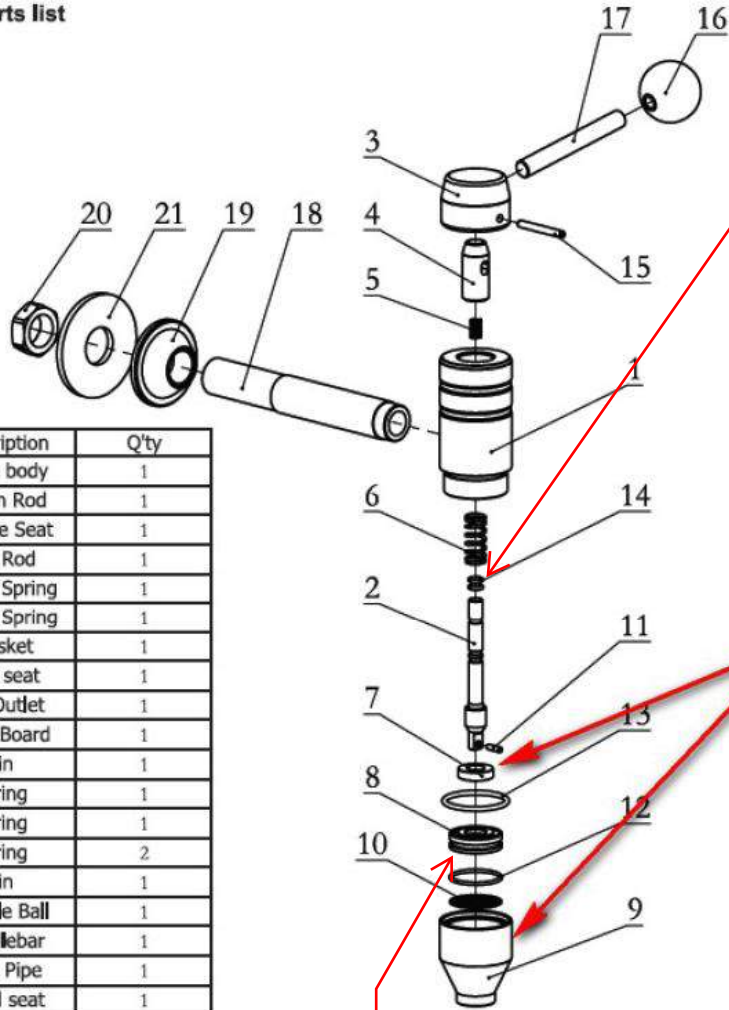
Gasket Must Be Installed with Ridge Down to Properly Contact Smooth Side of Seat

O-Ring on Seat Must be Greased Very Well

Oil Bar Seal Replacement

This can be accomplished without having to remove the oil bar from the wall.
 Caution: Disconnect air supply from pump and bleed off oil pressure before replacing the oil seals.

Explore and Parts list



Part No.	Description	Q'ty
1	Valve body	1
2	Piston Rod	1
3	Handle Seat	1
4	Pull Rod	1
5	Upper Spring	1
6	Lower Spring	1
7	Gasket	1
8	Seal seat	1
9	Oil Outlet	1
10	Filter Board	1
11	Pin	1
12	O-ring	1
13	O-ring	1
14	O-ring	2
15	Pin	1
16	Handle Ball	1
17	Handlebar	1
18	Inlet Pipe	1
19	Fixed seat	1
20	Nut	1
21	Washer	1

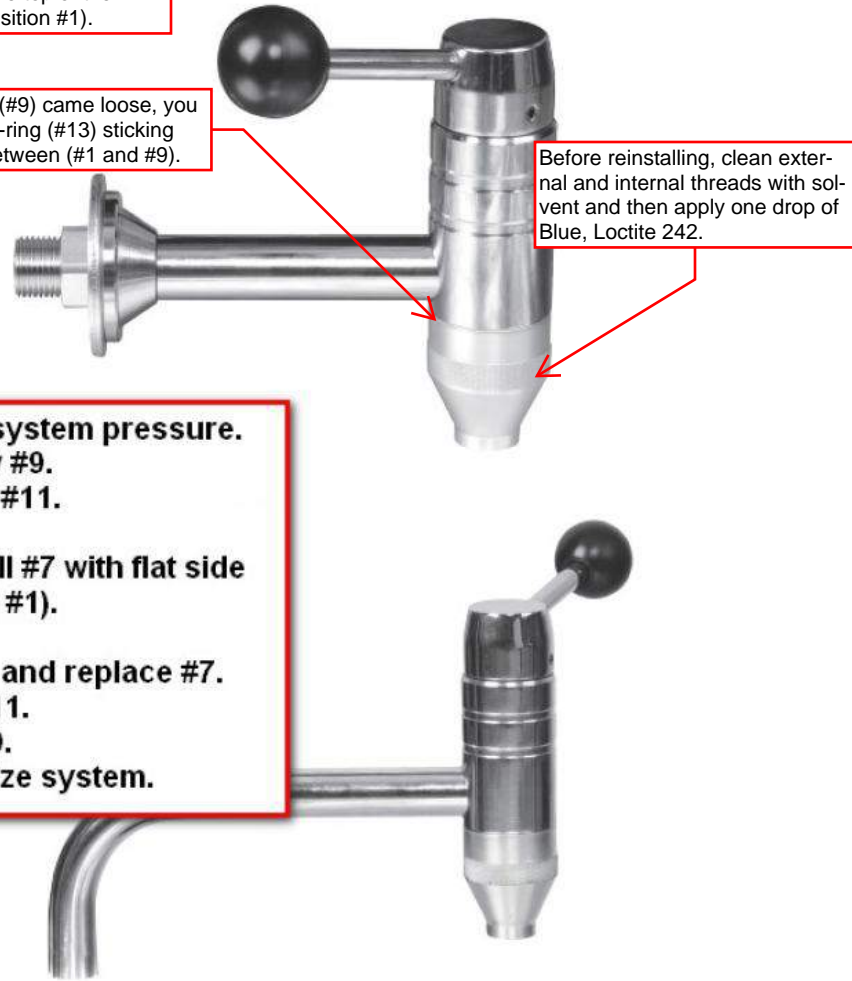
If spigot is leaking, check for debris embedded in the seal (#8)

These seals typically don't have to be replaced unless the shaft is leaking out of the top of the spigot body (position #1).

If oil outlet (#9) came loose, you may see O-ring (#13) sticking out from between (#1 and #9).

1. Relieve system pressure.
 2. Unscrew #9.
 3. Remove #11.
- Note: Install #7 with flat side up (toward #1).**
4. Remove and replace #7.
 4. Install #11.
 5. Install #9.
 6. Pressurize system.

OIL TAP



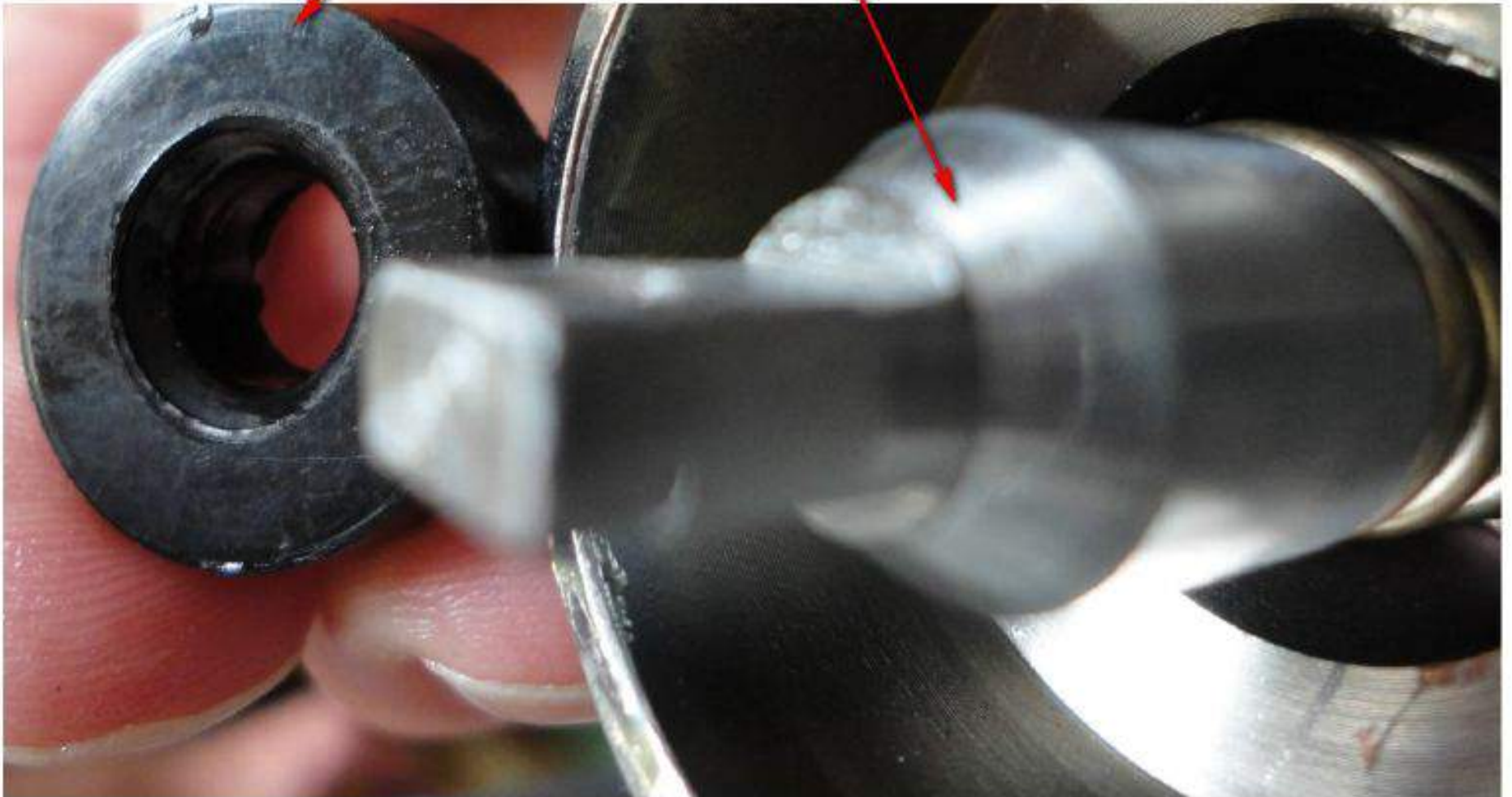
Before reinstalling, clean external and internal threads with solvent and then apply one drop of Blue, Loctite 242.

WEARING PARTS

S1894					
Part No.	Description	Q'ty	Part No.	Description	Q'ty
7	Gasket	1	13	O-ring	1
12	O-ring	1	14	O-ring	1

Oil Bar Seal Replacement

Install seal with flat side of seal/gasket on left toward the tapered end of the shaft below



Oil Bar Seal Replacement

10/3/2013 1:19:33 PM

Seal correctly installed onto shaft.



Oil Bar Seal Replacement

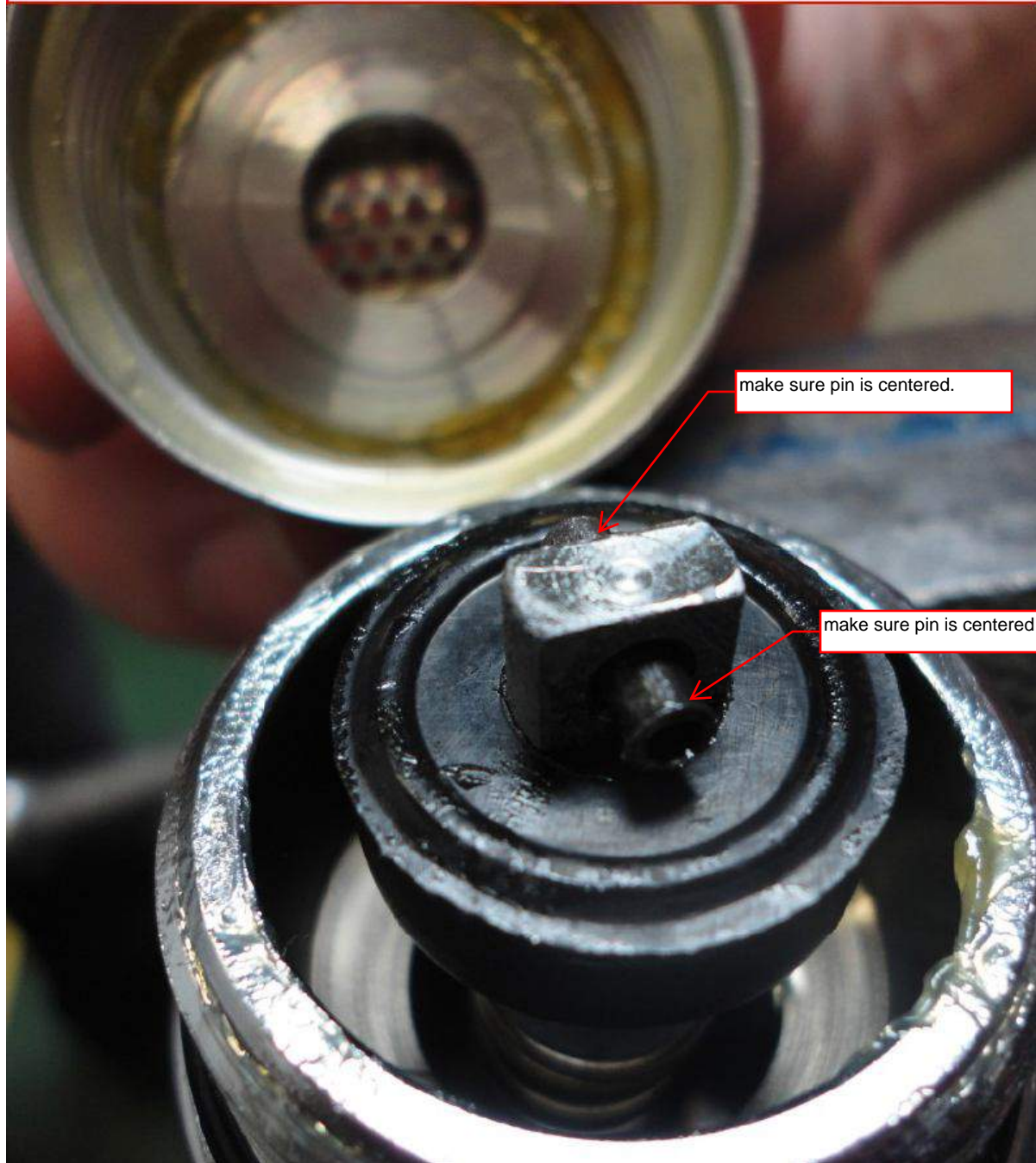
10/3/2013 1:22:08 PM

Reinstalling the cross pin through the shaft.



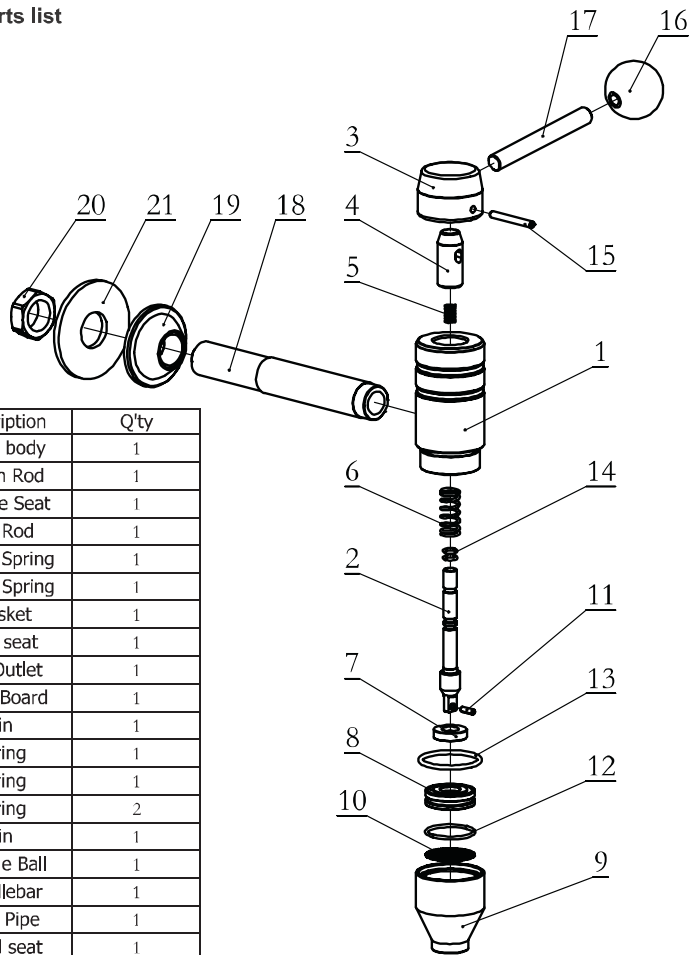
10/3/2013 1:24:24 PM

Cross pin installed in preparation for the replacement of the outlet.



TIM-5-A2, TIM-724-1B Oil Spigot replacement

Explore and Parts list



Part No.	Description	Q'ty
1	Valve body	1
2	Piston Rod	1
3	Handle Seat	1
4	Pull Rod	1
5	Upper Spring	1
6	Lower Spring	1
7	Gasket	1
8	Seal seat	1
9	Oil Outlet	1
10	Filter Board	1
11	Pin	1
12	O-ring	1
13	O-ring	1
14	O-ring	2
15	Pin	1
16	Handle Ball	1
17	Handlebar	1
18	Inlet Pipe	1
19	Fixed seat	1
20	Nut	1
21	Washer	1

WEARING PARTS

S1894					
Part No.	Description	Q'ty	Part No.	Description	Q'ty
7	Gasket	1	13	O-ring	1
12	O-ring	1	14	O-ring	1

OIL TAP





WARNING:

Read carefully and understand all INSTRUCTIONS before operating. Failure to follow the safety rules and other basic safety precautions may result in serious personal injury. Save these instructions in a safe place and on hand so that they can be read when required.

Technical Details

Ltem No.				
Lnlet Connection	BSP1/2"	NPS1/2"	BSP1/2"	NPS1/2"

- Maximum fluid pressure 100BAR/1450PSI.

Safety Precautions

GENERAL SAFETY RULES

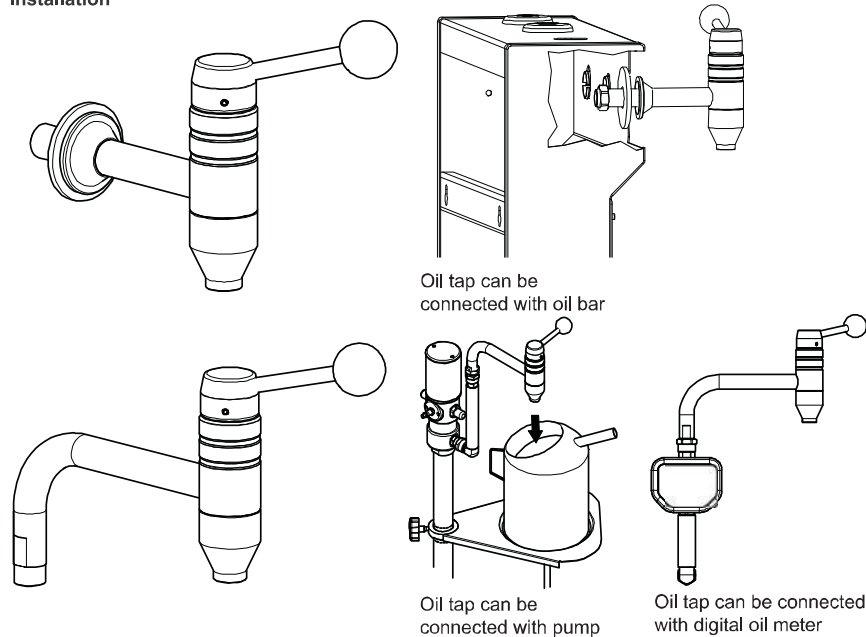


WARNING: Read and understand all instructions.

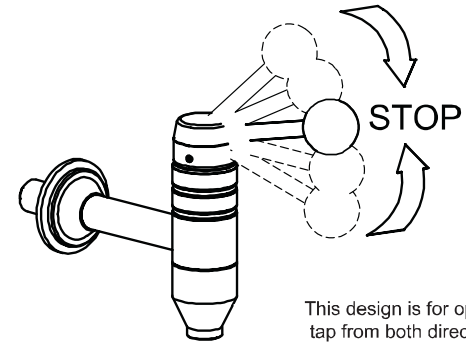


WARNING: The warnings, cautions, and instructions discussed in this instruction manual cannot cover all possible conditions or situations that could occur. It must be understood by the operator that common sense and caution are factors which cannot be built into this product, but must be supplied by the operator.

Installation



Operation



This design is for opening the tap from both directions. The ball valve can be turned off automatically. There is a filter inside of the tap

Limited Warranty

1. The manufacturer warrants this product against defects in material and craftsmanship, for a period of 36 months from date of purchase, but not including wearing parts.
2. Manufacturer's liability is limited to replacement or repair of defective material within the warranty period, when returned freight prepaid to the distributor or their designated service depot.
3. The warranty does not cover damage caused by accident, misuse or faulty installation.
4. The product must be installed and maintained in compliance with the instructions.



WARNING

Your risk from these exposures varies, depending on how often you do this type of work. To reduce your exposure to these chemicals: work in a well ventilated area, and work with approved safety equipment, such as those dust masks that are specially designed to filter out microscopic particles.

1/2" NPT threads

TIM-1501-88

Y45-90

TIM-199-12
FLOW Restrictor

TIM-1405-88

